

The New AYC Regalia Catalogue

As part of a revamped approach to regalia, we are pleased to introduce this catalogue and a new way to order. In the past we have traditionally maintained an inventory of items. This has been an expensive and less than optimal use of resources. This new program will have a number of new features that will create efficiencies and enhance the quality of our offerings. In a nutshell, you will be able to order what you want, and personalize it if you want. This new approach should lead to a better experience for you as Senior Members and avoid the continued expense of maintaining an inventory of goods that does not move.

How does it work?

1. Review the catalogue. There are 6 different garment offerings for Women, and 6 different garment items for men.
2. Pick your item. Record the Order Code, pick your colour choice using the code. Decide if you want the AYC Wheel Logo, AYC Burgee Logo or the AYC Signal Flag Logo
3. Decide if you want to personalize your garment item. You can put your first name, last name, nickname or boatname. There is an additional charge of \$5.00 per garment. This additional embroidery will be in block letters.
4. Send your e-mail order to Treasurer@ayc.ca . The Treasurer will confirm the order and the Price.
5. Treasurer will compile and submit the orders to the vendor on the 1st & 15th of each month. The order will take about 10 days to fulfill. The Treasurer will then make arrangements for you to pay and receive your items.

Sample Order e-mail:

I would like to place the following order for AYC regalia:

2 – Mens Jersey Tees – Order Code -3001. 1st Tee will be 2XL/Silver 427C/Burgee Logo. 2nd will be XL/Red 187C/Signal Flags. Both t-shirts will have "Highlander" on the right sleeve. Cost \$ 18 (2XL)+ \$15 (XL) + \$10 (personalize) = \$53.00 Total. I will pay cash on pick up.

1 – Women's Soft Shell Jacket – Order Code L760. S/Navy533c/AYC Wheel. Print "Highlander" on Right Breast Panel. Cost \$47 (jacket) + \$5 (Higlander) = \$53.00. I will pay cash on pick up.

Thank You - Jane Smith, "Highlander".

AYC Regalia Price List

Note: All prices include embroidery of your choice. AYC Wheel, Burger or Signal Flag. Personalize your garment with your "Boat Name" in block letters for an addition \$5.00 per item.

Women's Wear

Page	Product	Order Code	Colours	XS-XL	2XL	3XL	4XL
1	T-Shirt - Ladies Active Cotton Crew	ATC8000	19 Colours	\$ 16.00	\$ 18.00	\$ 19.00	\$ 20.00
2	T-Shirt - Ladies Active Cotton V-Neck	64VOOL	8 Colours	\$ 16.00	\$ 18.00	\$ 19.00	
3	Sport Shirt - Classic Pique	L400	15 Colours	\$ 28.00	\$ 29.00	\$ 31.00	\$ 34.00
4	Soft Shell Jacket	L0760	2 Colours	\$ 55.00	\$ 57.00	\$ 59.00	\$ -
5	Textured Hooded Soft Shell	L766	Black only	\$ 63.00	\$ 65.00	\$ 68.00	\$ 70.00
6	Everyday Fleece Jacket	L7502	6 Colours	\$ 30.00	\$ 33.00	\$ 35.00	\$ 38.00

Please check garment measurement and general sizing guide on the back page of each item. No refund, exchange on personalized items. Others will be refunded at 90% of purchase price.

Men's Wear

Page	Product	Order Code	Colours	XS-XL	2XL	3XL	4XL
7	T-Shirt	6400	18 Colours	\$ 11.00	\$ 13.00	\$ 17.00	
8	Jersey Tee	3001	13 Colours	\$ 15.00	\$ 18.00	\$ 21.00	\$ 25.00
9	Sport Shirt - Classic Pique	S400	15 Colours	\$ 28.00	\$ 29.00	\$ 31.00	\$ 34.00
10	Everyday Fleece Jacket	J7502	5 Colours	\$ 30.00	\$ 33.00	\$ 35.00	\$ 38.00
11	Soft Shell Jacket	J0760	2 Colours	\$ 55.00	\$ 57.00	\$ 59.00	
12	Textured Hooded Soft Shell Jacket	J766	Black only	\$ 63.00	\$ 65.00	\$ 68.00	\$ 70.00

eurospuncollection

ATC8000

Product Features:

- 6.8-oz, 100% combed and ring spun cotton
- Ultra soft 30 single jersey
- Double needle cover stitch at sleeve and bottom hem

Adult sizes: XS-4XL

Icons/Fabric Features:



Available Colours and PMS Colours

Textile fabric colours are subject to dye lot variation and will not be exact match to print pantone reference



*95/5 cotton/viscose **60/40 cotton/polyester

ATC8000- ATC™ Euro Spun Tee**GARMENT MEASUREMENTS**

Size	XS	S	M	L	XL	2XL	3XL	4XL
Chest - <i>Half Measure</i>	18 1/2"	20"	21 1/2"	23"	24 1/2"	26"	28"	30"
Chest - <i>Full Measure</i>	37"	40"	43"	46"	49"	52"	56"	60"
Body Length from HPS	26"	27"	28"	29"	30"	31"	31 1/2"	32"
Sleeve Length from CB	17 3/4"	18 1/2"	19 1/4"	20"	20 3/4"	21 1/2"	22 1/4"	23"

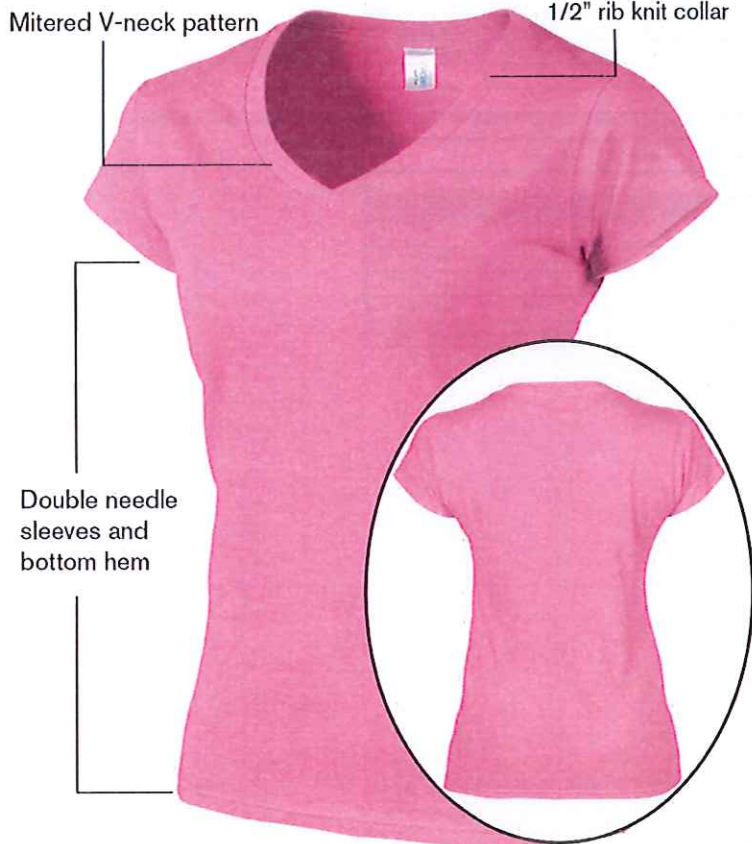
Finished measurements in inches. Refer to How to Measure guide for detailed information on measurement instructions.

ADULT General Sizing Guide

Size	XS	S	M	L	XL	2XL	3XL	4XL
Chest	30"-32"	34"-36"	38"-40"	42"-44"	46"-48"	50"-52"	54"-55"	56"-57"
Waist	26"-29"	29"-32"	32"-35"	35"-38"	38"-41"	41"-44"	44"-47"	47"-50"
Sleeve Length-CB	31"-32"	32"-33 1/2"	34"-35"	35"-36"	36"-37"	37"-38"	38"-39"	38 1/2"-39"



eurospuncollection



64V00L

Product Features:

- 7.5-oz, 100% cotton preshrunk jersey
- Deluxe 30 single
- Taped neck and shoulders
- Side seamed

Ladies' Sizes: S-3XL

Fabric Features:



Available Colours and PMS Colours

Textile fabric colours are subject to dye lot variation and will not be exact match to print pantone reference



*90/10 Cotton/Polyester

**65/35 Cotton/Polyester

64V00L - GILDAN® Softstyle Junior Fit V-Neck Ladies' T-Shirt

GARMENT MEASUREMENTS

Size	S	M	L	XL	2XL	3XL
Chest - <i>Half Measure</i>	16"	17"	18 1/2"	19 1/2"	22"	23 1/2"
Chest - <i>Full Measure</i>	32"	34"	37"	39"	44"	47"
Body Length from HPS	25 1/4"	26 1/4"	27 1/4"	28"	28 1/2"	29"
Sleeve Length-CB	11 1/2"	12"	12 1/2"	13 1/4"	14"	15"

Finished measurements in inches. Refer to "How to Measure" guide for detailed information on measurement instructions.

LADIES' General Sizing Guide

Size	S	M	L	XL	2XL	3XL
Numeric Size	4-6	8-10	12-14	16	18-20	22
Bust	35"-36"	37"-38"	39"-41"	42"-44"	45"-47"	48"-51"
Waist	26"-27"	28"-30"	30"-32"	33"-35"	36"-38"	40"-42"
Hip	35"-37"	37"-39"	39"-41"	42"-44"	45"-47"	48"-50"
Sleeve Length-CB	30 1/2"-31"	31 1/2"-32"	32 1/2"-33"	33 1/2"-34"	34"-34 1/2"	34 1/2"-35"

GILDAN®



Coal Harbour® Classic Pique Ladies' Sport Shirt - L400

Product Features:

- 11.7-oz, 100% ring spun cotton pique knit
- "Coal Harbour®" engraved, horn tone buttons
- Locker patch
- Reinforced topstitching throughout
- Garment washed and silicon treated
- Side slits

Ladies' sizes XS-4XL

Corresponding adult style:
Classic Pique sport shirt - S400

Fabric Detail:



Available Colours and PMS Colours

Textile fabric colours are subject to dye lot variation and will not be exact match to print pantone reference

Athletic Gold 137C	Banana Between 7402C & 7403C	Black Black 6C	Blueberry 7682C	Burgundy 505C	Coal Grey Between Cool Grey 10C & Cool Grey 11C	Faded Olive 417C	Honeydew 577C
Navy 533C	Purple 669C	Red 207C	Royal 654C	Sandstone 7502C	Sorbet 163C	White N/A	

Page 3

L400 - Coal Harbour® Ladies' Classic Pique Sport Shirt

GARMENT MEASUREMENTS

Finished Measurements in Inches

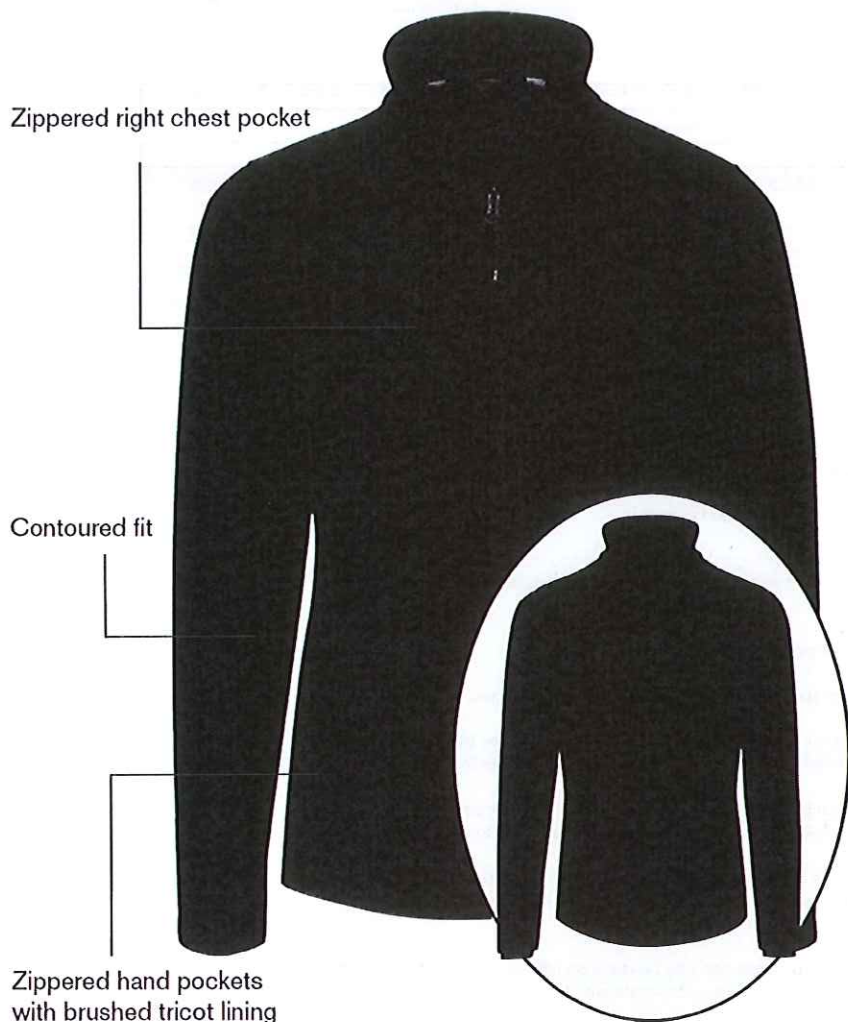
Size	XS	S	M	L	XL	2XL	3XL	4XL
Chest	19	20	21	22	23	24 1/2	27	29 1/2
CB Length	26	26 1/2	27	27 1/2	28	28 1/2	28 1/2	29 1/2

* Chest is measured 1" down from the armhole (1/2 measurement). CB length is measured from the center of the back neck seam to the hem.

WOMEN'S SIZING CHART

	XS	S	M	L	XL	2XL	3XL	4XL
Numeric Size	2	4-6	8-10	12-14	16-18	20-22	24-26	28-30
Bust	32-34	35-36	37-38	39-41	42-44	45-47	48-51	52-55

Bust: Measure under your arms at the fullest part of your chest.



L0760

Product Features:

- Exterior: 100% polyester
- Interior: 100% polyester brushed tricot
- 8000mm/800g/m2 waterproof/breathability rating
- Full length inner storm flap with comfort chin guard
- Reverse coil zipper at centre front, chest and hand pockets
- Internal storm cuffs

Ladies' sizes: XS-4XL

Icons/Fabric Features:



Available Colours and PMS Colours

Textile fabric colours are subject to dye lot variation and will not be exact match to print pantone reference

BLACK

GRAVEL



Black 6C



N/A

Due to the nature of polyester, special care must be taken throughout the decoration process.

L0760 - Coal Harbour® Premier Soft Shell Ladies' Jacket

GARMENT MEASUREMENTS

Size	XS	S	M	L	XL	2XL	3XL	4XL
Chest - <i>Half Measure</i>	19"	20"	21"	22 1/2"	24"	25 1/2"	27 1/2"	29 1/2"
Chest - <i>Full Measure</i>	38"	40"	42"	45"	48"	51"	55"	59"
Body Length from HPS (At Back)	25 1/2"	26"	26 1/2"	27 1/2"	28 1/2"	29 1/2"	30"	30 1/2"
Sleeve Length-CB	32 1/2"	33"	33 1/2"	34"	34 1/2"	35"	35 1/2"	36"

Finished measurements in inches. Refer to "How to Measure" guide for detailed information on measurement instructions.

LADIES' General Sizing Guide

Size	XS	S	M	L	XL	2XL	3XL	4XL
Numeric Size	2	4-6	8-10	12-14	16	18-20	22	24
Bust	32"-34"	35"-36"	37"-38"	39"-41"	42"-44"	45"-47"	48"-51"	52"-55"
Waist	24"-25"	26"-27"	28"-30"	30"-32"	33"-35"	36"-38"	40"-42"	42"-44"
Hip	33"-35"	35"-37"	37"-39"	39"-41"	42"-44"	45"-47"	48"-50"	50"-52"
Sleeve Length-CB	30"-30 1/2"	30 1/2"-31"	31 1/2"-32"	32 1/2"-33"	33 1/2"-34"	34"-34 1/2"	34 1/2"-35"	34 1/2"-35"

COAL HARBOUR®

DECORATING INSTRUCTIONS FOR POLYESTER FABRICS

Due to the nature of polyester, special care must be taken throughout the decoration process. Here are some tips to effectively decorate our performance products.

- Garment temperature must not exceed 320°F or 160°C. Exceeding this temperature will cause the fabric to shrink, become wavy or cause dye migration.
- Dryer temperature and belt speeds must be changed accordingly for polyester fabric.
- If flashing these garments, do not exceed 1-2 seconds. Anything longer may damage the fabric as stated above.
- **Screen Printing:** These garments require the use of poly inks that cures at a lower temperature. A Dyno Grey base blocker on all colours and a second white base blocker on all dark colours are recommended. Please consult your ink supplier for more information.
- Polyester requires a longer cooling time than cotton. Avoid overlap of garments and screen-print/heat transfer until the garments are cooled. Failure to cool the fabric prior to stacking into a printer's fold may cause the fabric and applied ink to stick together.
- **Heat Transfers:** Poly mark heat transfers need to be created with an anti-migration layer in the design. This process can only be done on white or very light colour shirts. Inks used in printing paper design needs to be darker than the base fabric or colour will migrate with the fabric colour resulting in a bleeding effect.
- **Sublimation Printing:** As noted for the poly mark heat transfers, this process can only be done on white or very light colour shirts. Inks used in printing paper design needs to be darker than the base fabric or colour will migrate with the fabric colour resulting in a bleeding effect.
- If you heat press these garments, you must adjust the time, temperature and pressure. Failure to do so may damage the fabric as stated above.
- A test sample run is recommended, especially if you have a large order or if your printer does not specialize in printing on performance fabrics.



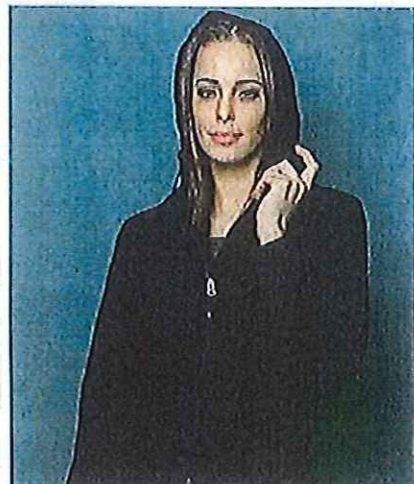
Available Colours and PMS Colours

Textile fabric colours are subject to dye lot variation and will not be exact match to print pantone reference

Black



Black 6C



Coal Harbour® Textured Hooded Soft Shell Ladies' Jacket - L766

Product Features:

- Exterior: 96/4 polyester/spandex woven shell bonded to 100% textured polyester micro fleece with a laminated film insert
- 1000mm/1000g/m² waterproof breathable fabric
- Wind resistant and water repellent
- Easy grip zipper pull with "CH" logo
- Longer back hem for more coverage
- Open bottom hem with drawcord and toggles
- YKK zippers
- Easy embroidery access
- Gently contoured silhouette with princess seams
- Concealed zippered chest, left sleeve and front pockets

Ladies' sizes XS-4XL

Fabric Detail:



Smart Uses:

One part style, one part quality engineering, and one part texture – mixed together to become the Textured Hooded Soft Shell Jacket!

- Schools/camps
- Gift giving
- Sports teams & events
- Coaches/athletes
- Donations/door prizes
- And much more!

January 2013

Due to the nature of 100% polyester performance fabrics, special care must be taken throughout the screen printing process.

Page 5

L766 - Coal Harbour® Ladies' Textured Soft Shell Jacket

GARMENT MEASUREMENTS

Finished Measurements in Inches

Size	XS	S	M	L	XL	2XL	3XL	4XL
Chest	20 1/4	21 1/4	22 1/4	23 3/4	25 1/4	26 3/4	28 3/4	30 3/4
CB Length	25 1/2	26	26 1/2	27 1/2	28 1/2	29 1/2	30	30 1/2
Sleeve Length	32	32 1/2	33	33 5/8	34 1/4	34 7/8	35 5/8	36 3/8

Chest is measured 1" down from the armhole(1/2 measurement). CB length is measured from the center of the back neck seam to the hem. Sleeve length is measured from the center back neck seam to the end of the cuff.

WOMEN'S SIZING CHART

	XS	S	M	L	XL	2XL	3XL	4XL
Numeric Size	2	4-6	8-10	12-14	16-18	20-22	24-26	28-30
Bust	32-34	35-36	37-38	39-41	42-44	45-47	48-51	52-55

Bust Measure under your arms at the fullest part of your chest.



Coal Harbour® Everyday Fleece Ladies' Jacket - L7502



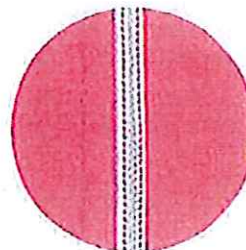
Product Features:

- 7.6 oz, 100% polyester anti-pill micro fleece
- 2-panel hood with polyester spandex binding
- Clear coil specialty zipper with dyed-to-match chain stitch
- Dyed-to-match taping at center front
- Front pockets with polyester tricot lining
- Gently contoured silhouette with princess seams
- Open bottom
- Coverstitched panel seams throughout
- Set-in sleeves with open cuffs and thumbholes

Ladies' sizes XS – 4XL

Comparable style:
J7502 – Everyday Fleece Jacket

Fabric Features / Details:



Available Colours and PMS Colours

Textile fabric colours are subject to dye lot variation and will not be exact match to print pantone reference

Black



Black 6C

Chive Green



Between
7742C & 7743C

Dark Fuschia



220C

Graphite



432C

Light Royal



301C

True Navy



533C

Due to the nature of 100% polyester performance fabrics, special care must be taken throughout the screen printing process.

June 2013

Page 6

L7502 - Coal Harbor® Everyday Fleece Ladies' Jacket

GARMENT MEASUREMENTS

Size	XS	S	M	L	XL	2XL	3XL	4XL
Chest - Half Measure	18 1/2"	19 1/2"	20 1/2"	22"	23 1/2"	25"	27"	29"
Chest - Full Measure	37"	39"	41"	44"	47"	50"	54"	58"
Body Length from HPS	25 1/2"	26"	26 1/2"	27 1/2"	28 1/2"	29 1/2"	30"	30 1/2"
Sleeve Length from CB	33 1/8"	33 5/8"	34 1/4"	34 7/8"	35 1/2"	36 1/8"	36 3/4"	37 3/8"

Finished measurements in inches. Refer to "How to Measure" guide for detailed information on measurement instructions.

LADIES' General Sizing Guide

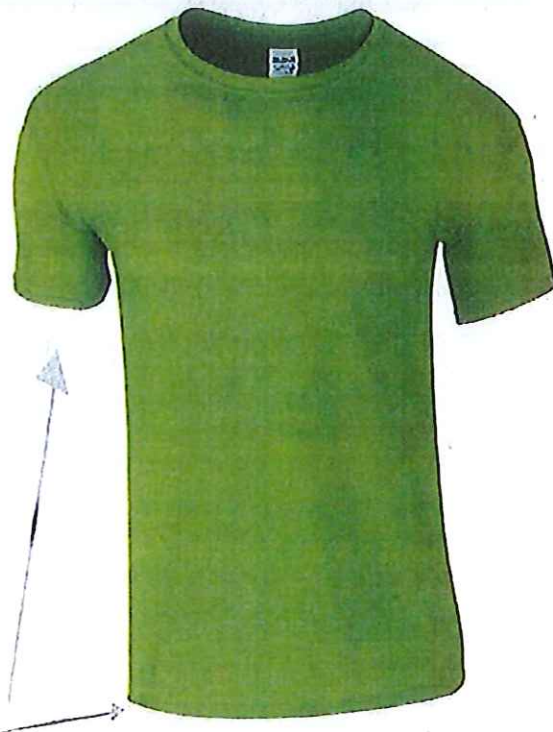
Size	XS	S	M	L	XL	2XL	3XL	4XL
Numeric Size	2	4-6	8-10	12-14	16	18-20	22	24
Bust	32"-34"	35"-36"	37"-38"	39"-41"	42"-44"	45"-47"	48"-51"	52"-55"
Waist	24"-25"	26"-27"	28"-30"	30"-32"	33"-35"	36"-38"	40"-42"	42"-44"
Hip	33"-35"	35"-37"	37"-39"	39"-41"	42"-44"	45"-47"	48"-50"	50"-52"
Sleeve Length - CB	30"-30 1/2"	30 1/2"-31"	31 1/2"-32"	32 1/2"-33"	33 1/2"-34"	34"-34 1/2"	34 1/2"-35"	34 1/2"-35"

Coal Harbour®

PRINTING INSTRUCTIONS FOR POLYESTER WICKING FABRICS

Due to the nature of 100% polyester performance fabrics, special care must be taken throughout the printing process. Here are some tips to effectively decorate our performance products:

- Garment temperature must not exceed 320°F or 160°C. Exceeding this temperature will cause the fabric to shrink, become wavy or cause dye migration.
- Dryer temperature and belt speeds must be changed accordingly for polyester fabric.
- If flashing these garments, do not exceed 1-2 seconds. Anything longer may damage the fabric as stated above.
- **Screen Printing:** These garments require the use of poly inks that cure at a lower temperature. A Dyno Grey base blocker on all colours and a second white base blocker on all dark colours are recommended. Please consult your ink supplier for more information.
- Polyester requires a longer cooling time than cotton. Avoid overlap of garments and screen-print/heat transfer until the garments are cooled. Failure to cool the fabric prior to stacking into a printer's fold may cause the fabric and applied ink to stick together.
- **Heat Transfers:** Poly mark heat transfers need to be created with an anti-migration layer in the design. This process can only be done on white or very light coloured fabric. Inks used in printing paper design need to be darker than the base fabric or colour will migrate with the fabric colour resulting in a bleeding effect.
- **Sublimation Printing:** As noted for the poly mark heat transfers, this process can only be done on white or very light coloured fabric. Inks used in printing paper design need to be darker than the base fabric or colour will migrate with the fabric colour resulting in a bleeding effect.
- If you heat press these garments, you must adjust the time, temperature and pressure. Failure to do so may damage the fabric as stated above.
- A test sample run is recommended, especially if you have a large order or if your printer does not specialize in printing on performance fabrics.



Double-needle sleeves and hem

Available Colours and PMS Colours

Textile fabric colours are subject to dye lot variation and will not be exact match to print pantone reference

COLOURS	NEUTRALS		HEATHERS	
	CHARCOAL 425C	***DARK HEATHER N/A	RED 199C	***HEATHER PURPLE N/A
Black6C 3XL	1655C	200C	7519C	
BLACK	ORANGE	CHERRY RED	DARK CHOCOLATE	
IRISH GREEN 347C	***HEATHER IRISH GREEN N/A	LIGHT BLUE 471C	***HEATHER NAVY N/A	ANTIQUE SAPPHIRE N/A
7490C	5743C	N/A	293C	539C
KIWI	MILITARY GREEN	***HEATHER ROYAL	ROYAL	NAVY

6400

Gildan®
Softstyle® TShirt

Product Features:

- 7.5-oz, 100% cotton preshrunk Jersey knit
- 7/8" rib knit collar
- Deluxe 30 single
- Taped neck and shoulders
- Rolled forward shoulders
- ** 90/10 cotton/polyester
- ***65/35 polyester/cotton

Adult sizes S - 3XL in selected colours

Fabric Details



Comparable styles:

640L – Softstyle® Junior Fit Ladies' T-Shirt

64V00 – Softstyle® V-Neck T-Shirt

64V00L – Softstyle® V-Neck Ladies' T-Shirt



April 2014

6400 - Gildan® Softstyle Adult T-Shirt

GARMENT MEASUREMENTS

Size	S	M	L	XL	2XL	3XL
Chest - <i>Half Measure</i>	18"	20"	22"	24"	26"	28"
Chest - <i>Full Measure</i>	36"	40"	44"	48"	52"	56"
Body Length from HPS	27"	28"	29"	30"	31"	32"
Sleeve Length-CB	15 3/4"	17"	18 1/4"	19 1/2"	20 3/4"	22"

Finished measurements in inches. Refer to "How to Measure" guide for detailed information on measurement instructions.

ADULT General Sizing Guide

Size	S	M	L	XL	2XL	3XL
Chest	34"-36"	38"-40"	42"-44"	46"-48"	50"-52"	54"-55"
Waist	29"-32"	32"-35"	35"-38"	38"-41"	41"-44"	44"-47"
Sleeve Length-CB	32"-33 1/2"	34"-35"	35"-36"	36"-37"	37"-38"	38"-39"

The GILDAN logo is displayed in a bold, blue, sans-serif font. The letters are slightly shadowed, giving it a three-dimensional appearance. The logo is positioned to the left of the main body of the document.



3001

Product Features:

- 7-oz, 100% combed and ring spun cotton
- Super soft 30 single jersey knit
- Retail fit
- Unisex sizing

Ladies' sizes: S-2XL

Fabric Features:



Available Colours and PMS Colours

Textile fabric colours are subject to dye lot variation and will not be exact match to print pantone reference



*90/10 cotton/polyester **52/48 cotton/polyester

3001 - BELLA+CANVAS™ Jersey Tee**GARMENT MEASUREMENTS**

Size	XS	S	M	L	XL	2XL	3XL	4XL
Chest - <i>Half Measure</i>	16 1/2"	18"	20"	22"	24"	26"	28"	30"
Chest - <i>Full Measure</i>	33"	36"	40"	44"	48"	52"	56"	60"
Body Length from HPS	27"	28"	29"	30"	31"	32"	33"	34"
Sleeve Length	8 1/2"	8 3/8"	8 5/8"	9 1/4"	9 7/8"	10 5/8"	11 1/4"	11 5/8"

Finished measurements in inches. Refer to How to Measure guide for detailed information on measurement instructions.

BELLA+CANVAS™ UNISEX SIZING

Size	XS	S	M	L	XL	2XL	3XL	4XL
Chest to fit	31" - 34"	34" - 37"	38" - 41"	42" - 45"	46" - 49"	50" - 53"	54" - 57"	58" - 61"

BELLA+CANVAS.
LOS ANGELES



**Coal Harbour®
Classic Pique Sport Shirt - S400**

Product Features:

- 11.7-oz, 100% ring spun cotton pique knit
- "Coal Harbour®" engraved, horn tone buttons
- Locker patch
- Reinforced topstitching throughout
- Garment washed and silicon treated
- Side slits

Adult sizes XS-4XL

Corresponding style:
Classic Pique Ladies' sport shirt - L400

Fabric Features / Details:



Available Colours and PMS Colours

Textile fabric colours are subject to dye lot variation and will not be exact match to print pantone reference

Athletic Gold 137C	Banana Between 7402C & 7403C	Black Black 6C	Blueberry 7682C	Burgundy 505C	Coal Grey Between Cool Grey 10C & Cool Grey 11C	Faded Olive 417C	Honeydew 577C
Navy 533C	Purple 669C	Red 207C	Royal 654C	Sandstone 7502C	Sorbet 163C	White N/A	

S400 - Coal Harbour® Classic Pique Sport Shirt

GARMENT MEASUREMENTS

Size	XS	S	M	L	XL	2XL	3XL	4XL
Chest - Half Measure	19"	20 1/2"	22"	23 1/2"	25"	26 1/2"	27 3/4"	30 1/2"
Chest - Full Measure	38"	41"	44"	47"	50"	53"	55 1/2"	61"
Body Length from CB	27 1/2"	28 1/2"	30 1/2"	31 1/2"	32 1/2"	33 1/2"	34"	34 1/2"
Sleeve Length from CB	9"	9 1/2"	11"	11 1/2"	12"	12 1/2"	13"	13 1/2"

Finished measurements in inches. Refer to "How to Measure" guide for detailed information on measurement instructions.

ADULT General Sizing Guide

Size	XS	S	M	L	XL	2XL	3XL	4XL
Chest	30"-32"	34"-36"	38"-40"	42"-44"	46"-48"	50"-52"	54"-56"	58"-60"
Waist	28"-29"	29"-32"	32"-35"	35"-38"	38"-41"	41"-44"	44"-47"	47"-50"
Sleeve Length-CB	31"-32"	32"-33 1/2"	34"-35"	35"-36"	36"-37"	37"-38"	38"-39"	39 1/2"-39"

Coal Harbour®



Coal Harbour® Everyday Fleece Jacket - J7502



Product Features:

- 7.6 oz, 100% polyester anti-pill micro fleece
- Clear coil specialty zipper with dyed-to-match chain stitch
- Dyed-to-match taping at center front and chest pocket
- Front pockets with polyester tricot lining
- Open cuffs and bottom
- Coverstitched panel seams throughout
- Set-in sleeves

Adult sizes XS – 4XL

Comparable style:

L7502 – Everyday Fleece Ladies' Jacket

Fabric Features / Details:



Available Colours and PMS Colours

Textile fabric colours are subject to dye lot variation and will not be exact match to print pantone reference

Black	Chive Green	Graphite	Light Royal	True Navy
Black 6C	Between 7742C & 7743C	432C	301C	533C

Due to the nature of 100% polyester performance fabrics, special care must be taken throughout the screen printing process.

June 2013

Page 10

J7502 - Coal Harbour® Everyday Fleece Jacket

GARMENT MEASUREMENTS

Size	XS	S	M	L	XL	2XL	3XL	4XL
Chest - Half Measure	20"	21 1/2"	23"	24 1/2"	26"	27 1/2"	29 1/2"	31 1/2"
Chest - Full Measure	40"	43"	46"	49"	52"	55"	59"	63"
Body Length from HPS	28"	28 1/2"	29"	29 1/2"	30 1/2"	31 1/2"	32"	32 1/2"
Sleeve Length from CB	34"	34 3/4"	35 1/2"	36 1/4"	37"	37 3/4"	38 1/2"	39 1/4"

Finished measurements in inches. Refer to "How to Measure" guide for detailed information on measurement instructions.

ADULT General Sizing Guide

Size	XS	S	M	L	XL	2XL	3XL	4XL
Chest	30"-32"	34"-36"	38"-40"	42"-44"	46"-48"	50"-52"	54"-55"	56"-57"
Waist	26"-29"	29"-32"	32"-35"	35"-38"	38"-41"	41"-44"	44"-47"	47"-50"
Sleeve Length-CB	31"-32"	32"-33 1/2"	34"-35"	35"-36"	36"-37"	37"-38"	38"-39"	38 1/2"-39"

Coal Harbour®

PRINTING INSTRUCTIONS FOR POLYESTER WICKING FABRICS

Due to the nature of 100% polyester performance fabrics, special care must be taken throughout the printing process. Here are some tips to effectively decorate our performance products:

- Garment temperature must not exceed 320°F or 160°C. Exceeding this temperature will cause the fabric to shrink, become wavy or cause dye migration.
- Dryer temperature and belt speeds must be changed accordingly for polyester fabric.
- If flashing these garments, do not exceed 1-2 seconds. Anything longer may damage the fabric as stated above.
- Screen Printing: These garments require the use of poly inks that cure at a lower temperature. A Dyno Grey base blocker on all colours and a second white base blocker on all dark colours are recommended. Please consult your ink supplier for more information.
- Polyester requires a longer cooling time than cotton. Avoid overlap of garments and screen-print/heat transfer until the garments are cooled. Failure to cool the fabric prior to stacking into a printer's fold may cause the fabric and applied ink to stick together.
- Heat Transfers: Poly mark heat transfers need to be created with an anti-migration layer in the design. This process can only be done on white or very light coloured fabric. Inks used in printing paper design need to be darker than the base fabric or colour will migrate with the fabric colour resulting in a bleeding effect.
- Sublimation Printing: As noted for the poly mark heat transfers, this process can only be done on white or very light coloured fabric. Inks used in printing paper design need to be darker than the base fabric or colour will migrate with the fabric colour resulting in a bleeding effect.
- If you heat press these garments, you must adjust the time, temperature and pressure. Failure to do so may damage the fabric as stated above.
- A test sample run is recommended, especially if you have a large order or if your printer does not specialize in printing on performance fabrics.

Zippered right chest pocket



Zippered hand pockets with brushed tricot lining

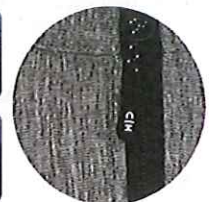
J0760

Product Features:

- Exterior: 100% polyester
- Interior: 100% polyester brushed tricot
- 8000mm/800g/m2 waterproof/breathability rating
- Full length inner storm flap with comfort chin guard
- Reverse coil zipper at centre front, chest and hand pockets
- Internal storm cuffs

Adult sizes: XS-4XL

Icons/Fabric Features:



Available Colours and PMS Colours

Textile fabric colours are subject to dye lot variation and will not be exact match to print pantone reference

BLACK



Black 6C

GRAVEL



N/A

Due to the nature of polyester, special care must be taken throughout the decoration process.

J0760 - Coal Harbour® Premier Soft Shell Jacket

GARMENT MEASUREMENTS

Size	XS	S	M	L	XL	2XL	3XL	4XL
Chest - Half Measure	20 1/2"	22"	23 1/2"	25"	26 1/2"	28"	30"	32"
Chest - Full Measure	41"	44"	47"	50"	53"	56"	60"	64"
Body Length from HPS (At Back)	26"	27"	28"	29"	30"	31"	31 1/2"	32"
Sleeve Length-CB	34 5/8"	35 1/4"	35 7/8"	36 1/2"	37 1/4"	38"	38 3/4"	39 1/2"

Finished measurements in inches. Refer to "How to Measure" guide for detailed information on measurement instructions.

ADULT General Sizing Guide

Size	XS	S	M	L	XL	2XL	3XL	4XL
Chest	30"-32"	34"-36"	38"-40"	42"-44"	46"-48"	50"-52"	54"-55"	56"-57"
Waist	26"-29"	29"-32"	32"-35"	35"-38"	38"-41"	41"-44"	44"-47"	47"-50"
Sleeve Length-CB	31"-32"	32"-33 1/2"	34"-35"	35"-36"	36"-37"	37"-38"	38"-39"	38 1/2"-39"

COAL HARBOUR®

DECORATING INSTRUCTIONS FOR POLYESTER FABRICS

Due to the nature of polyester, special care must be taken throughout the decoration process. Here are some tips to effectively decorate our performance products.

- Garment temperature must not exceed 320°F or 160°C. Exceeding this temperature will cause the fabric to shrink, become wavy or cause dye migration.
- Dryer temperature and belt speeds must be changed accordingly for polyester fabric.
- If flashing these garments, do not exceed 1-2 seconds. Anything longer may damage the fabric as stated above.
- **Screen Printing:** These garments require the use of poly inks that cures at a lower temperature. A Dyno Grey base blocker on all colours and a second white base blocker on all dark colours are recommended. Please consult your ink supplier for more information.
- Polyester requires a longer cooling time than cotton. Avoid overlap of garments and screen-print/heat transfer until the garments are cooled. Failure to cool the fabric prior to stacking into a printer's fold may cause the fabric and applied ink to stick together.
- **Heat Transfers:** Poly mark heat transfers need to be created with an anti-migration layer in the design. This process can only be done on white or very light colour shirts. Inks used in printing paper design needs to be darker than the base fabric or colour will migrate with the fabric colour resulting in a bleeding effect.
- **Sublimation Printing:** As noted for the poly mark heat transfers, this process can only be done on white or very light colour shirts. Inks used in printing paper design needs to be darker than the base fabric or colour will migrate with the fabric colour resulting in a bleeding effect.
- If you heat press these garments, you must adjust the time, temperature and pressure. Failure to do so may damage the fabric as stated above.
- A test sample run is recommended, especially if you have a large order or if your printer does not specialize in printing on performance fabrics.



Coal Harbour® Textured Hooded Soft Shell Jacket - J766

Product Features:

- Exterior: 96/4 polyester/spandex woven shell bonded to 100% textured polyester micro fleece with a laminated film insert
- 1000mm/1000g/m² waterproof breathable fabric
- Wind resistant and water repellent
- Easy grip zipper pull with "CH" logo
- Longer back hem for more coverage
- Open bottom hem with drawcord and toggles
- YKK zippers
- Easy embroidery access
- Zippered chest, left sleeve and front pockets with zipper garages

Adult sizes XS-4XL

Fabric Detail:



Available Colours and PMS Colours

Textile fabric colours are subject to dye lot variation and will not be exact match to print pantone reference

Black



Black 6C



Smart Uses:

One part style, one part quality engineering, and one part texture – mixed together to become the Textured Hooded Soft Shell Jacket!

- Schools/camps
- Gift giving
- Sports teams & events
- Coaches/athletes
- Donations/door prizes
- And much more!

January 2013

Due to the nature of 100% polyester performance fabrics, special care must be taken throughout the screen printing process.

J766 - Coal Harbour® Textured Hooded Soft Shell Jacket

GARMENT MEASUREMENTS

Size	XS	S	M	L	XL	2XL	3XL	4XL
Chest - Half Measure	21"	22 1/2"	24"	25 1/2"	27"	28 1/2"	30 1/2"	32 1/2"
Chest - Full Measure	42"	45"	48"	51"	54"	57"	61"	65"
Body Length from CB	28"	28 1/2"	29"	29 1/2"	30 1/2"	31 1/2"	32"	32 1/2"
Sleeve Length from CB	34 1/4"	35"	35 3/4"	36 1/2"	37 1/4"	38"	38 3/4"	39 1/2"

Finished measurements in inches. Refer to "How to Measure" guide for detailed information on measurement instructions.

ADULT General Sizing Guide

Size	XS	S	M	L	XL	2XL	3XL	4XL
Chest	30"-32"	34"-36"	38"-40"	42"-44"	46"-48"	50"-52"	54"-56"	58"-60"
Waist	28"-29"	29"-32"	32"-35"	35"-38"	38"-41"	41"-44"	44"-47"	47"-50"
Sleeve Length-CB	31"-32"	32"-33 1/2"	34"-35"	35"-36"	36"-37"	37"-38"	38"-39"	38 1/2"-39"

Coal Harbour®

PRINTING INSTRUCTIONS FOR POLYESTER WICKING FABRICS

Due to the nature of 100% polyester performance fabrics, special care must be taken throughout the printing process. Here are some tips to effectively decorate our performance products:

- Garment temperature must not exceed 320°F or 160°C. Exceeding this temperature will cause the fabric to shrink, become wavy or cause dye migration.
- Dryer temperature and belt speeds must be changed accordingly for polyester fabric.
- If flashing these garments, do not exceed 1-2 seconds. Anything longer may damage the fabric as stated above.
- Screen Printing: These garments require the use of poly inks that cure at a lower temperature. A Dyno Grey base blocker on all colours and a second white base blocker on all dark colours are recommended. Please consult your ink supplier for more information.
- Polyester requires a longer cooling time than cotton. Avoid overlap of garments and screen-print/heat transfer until the garments are cooled. Failure to cool the fabric prior to stacking into a printer's fold may cause the fabric and applied ink to stick together.
- Heat Transfers: Poly mark heat transfers need to be created with an anti-migration layer in the design. This process can only be done on white or very light coloured fabric. Inks used in printing paper design need to be darker than the base fabric or colour will migrate with the fabric colour resulting in a bleeding effect.
- Sublimation Printing: As noted for the poly mark heat transfers, this process can only be done on white or very light coloured fabric. Inks used in printing paper design need to be darker than the base fabric or colour will migrate with the fabric colour resulting in a bleeding effect.
- If you heat press these garments, you must adjust the time, temperature and pressure. Failure to do so may damage the fabric as stated above.
- A test sample run is recommended, especially if you have a large order or if your printer does not specialize in printing on performance fabrics.